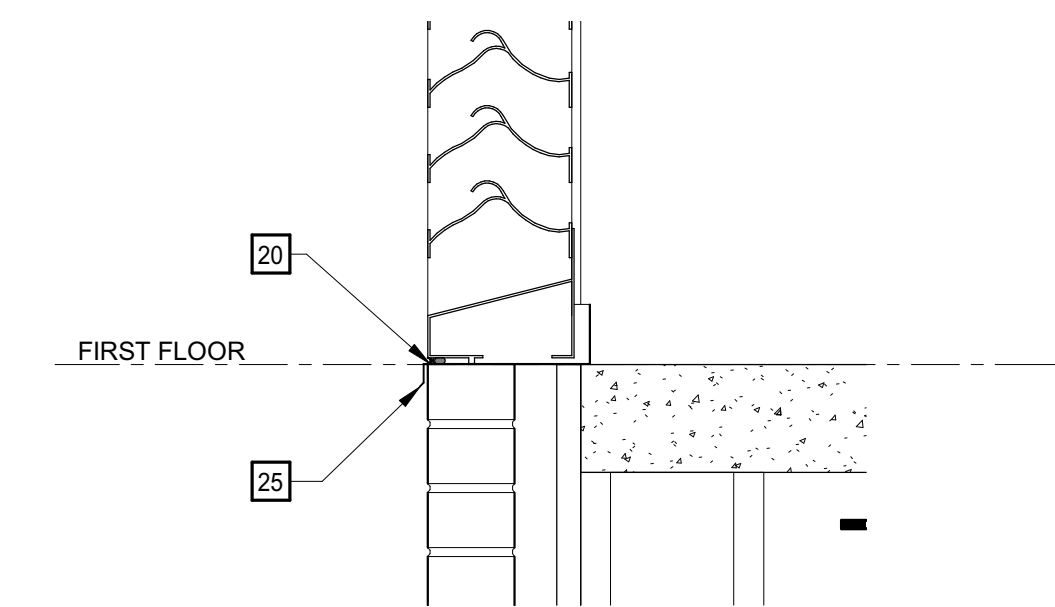
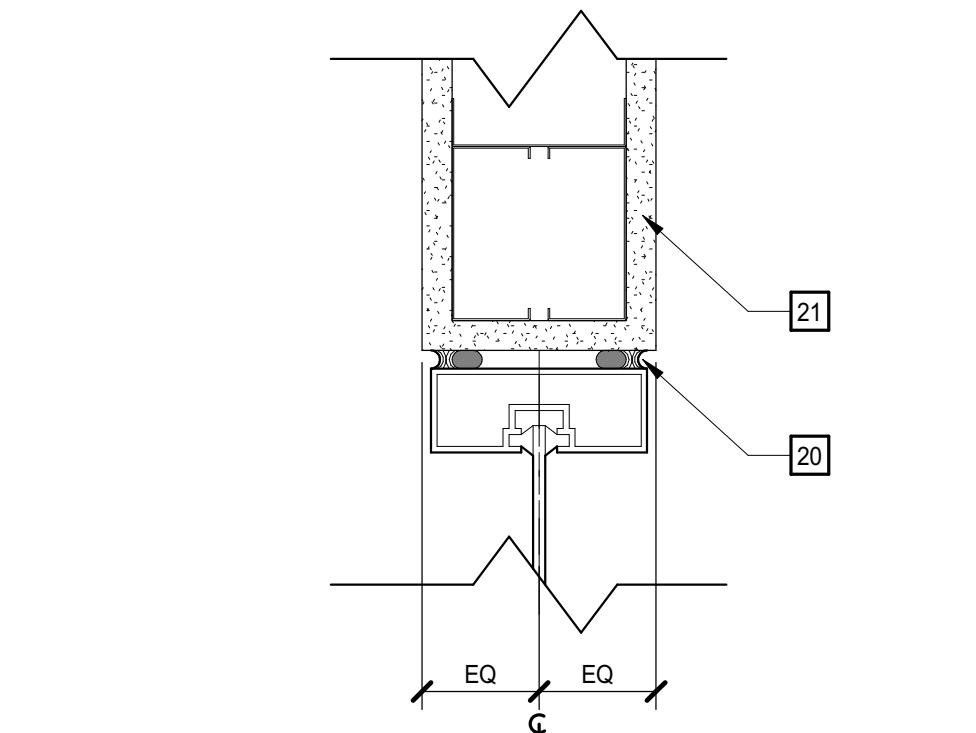


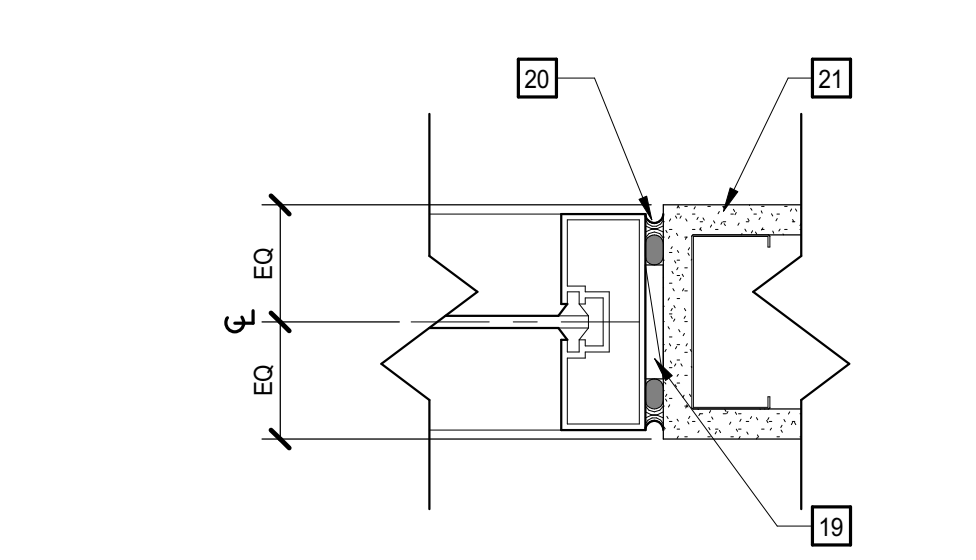
9 LOUVER SECTION 2ND FLR
1 1/2" = 1'-0"



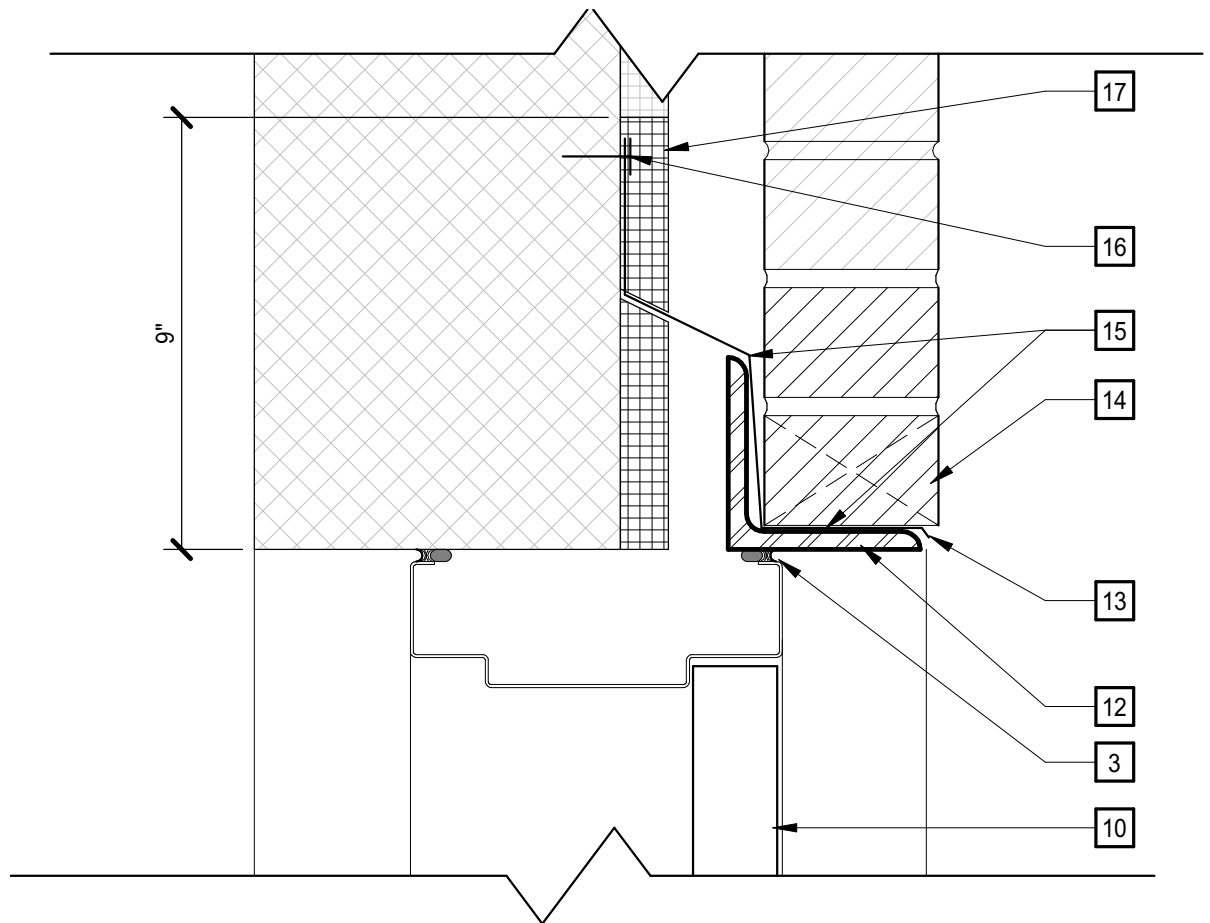
8 LOUVER DETAIL
1 1/2" = 1'-0"



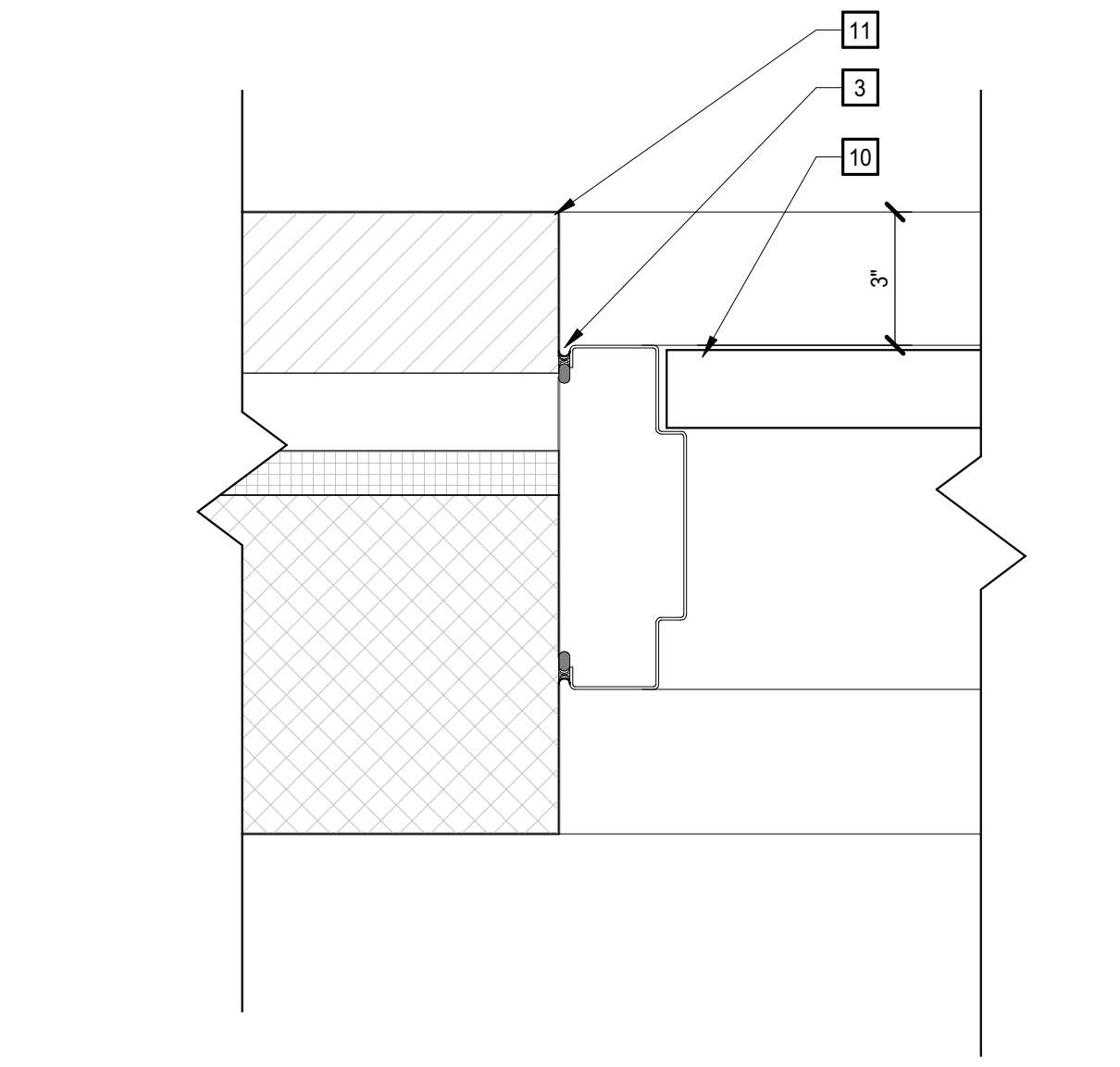
7 INTERIOR STOREFRONT HEAD DTL
3" = 1'-0"



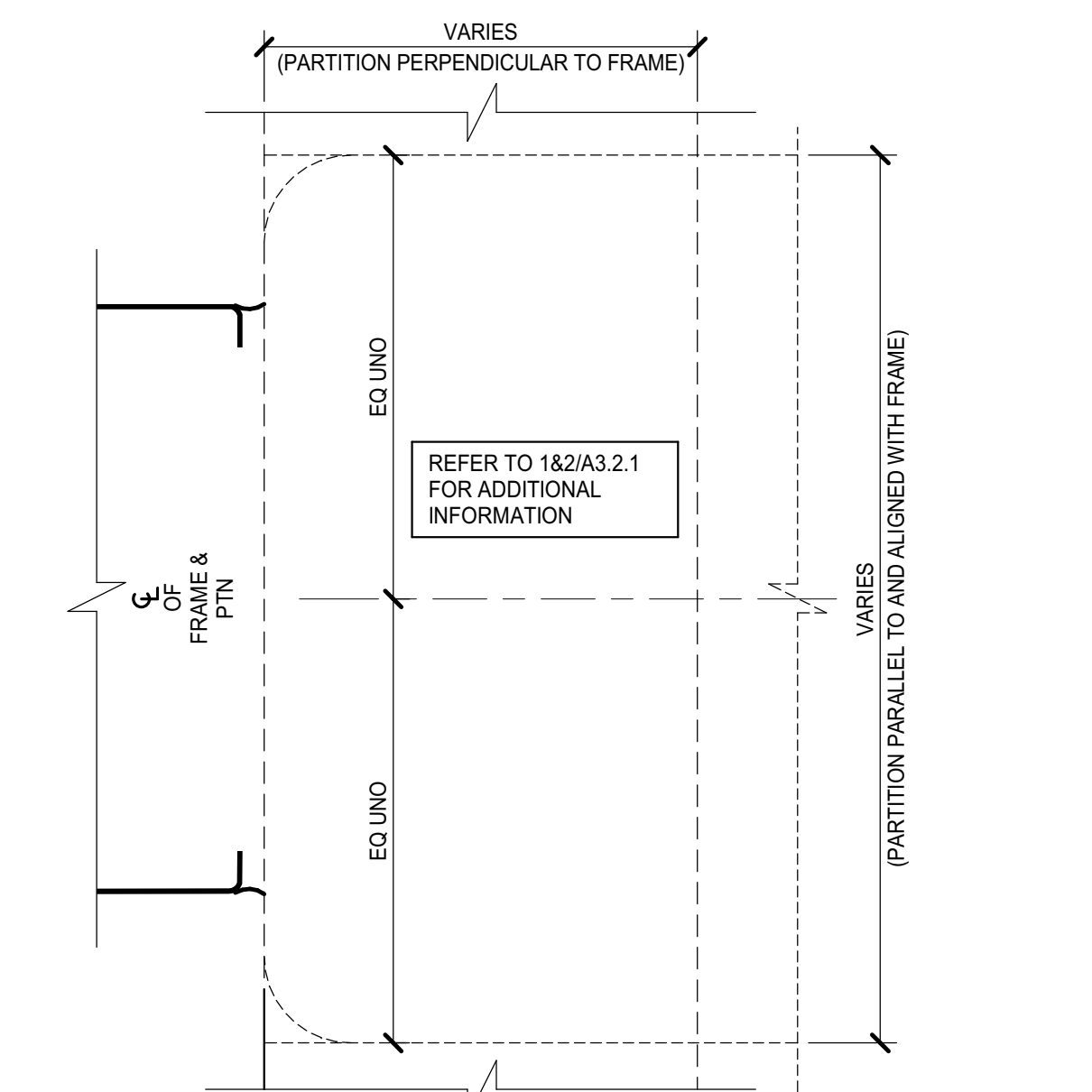
6 INTERIOR STOREFRONT JAMB DTL
3" = 1'-0"



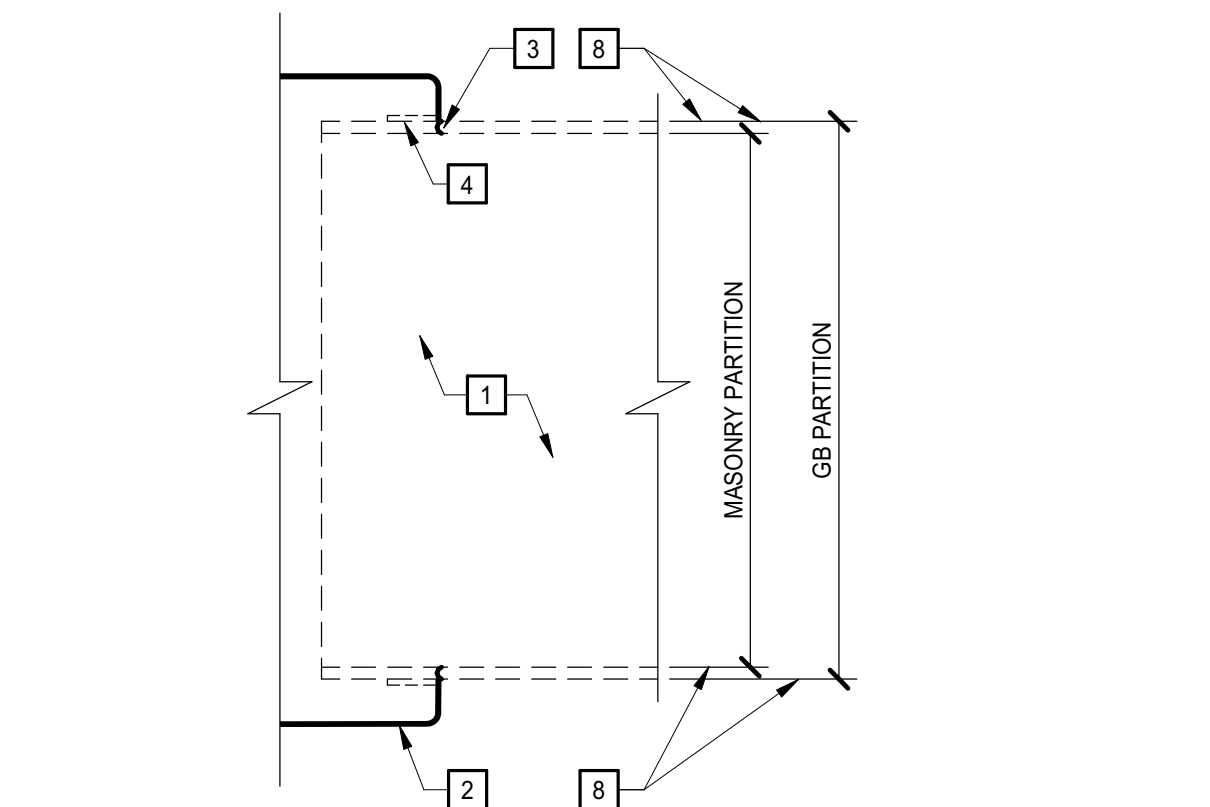
5 FIRST FLOOR - CMU HEAD
3" = 1'-0"



4 DOOR JAMB AT EXISTING CONSTRUCTION
3" = 1'-0"

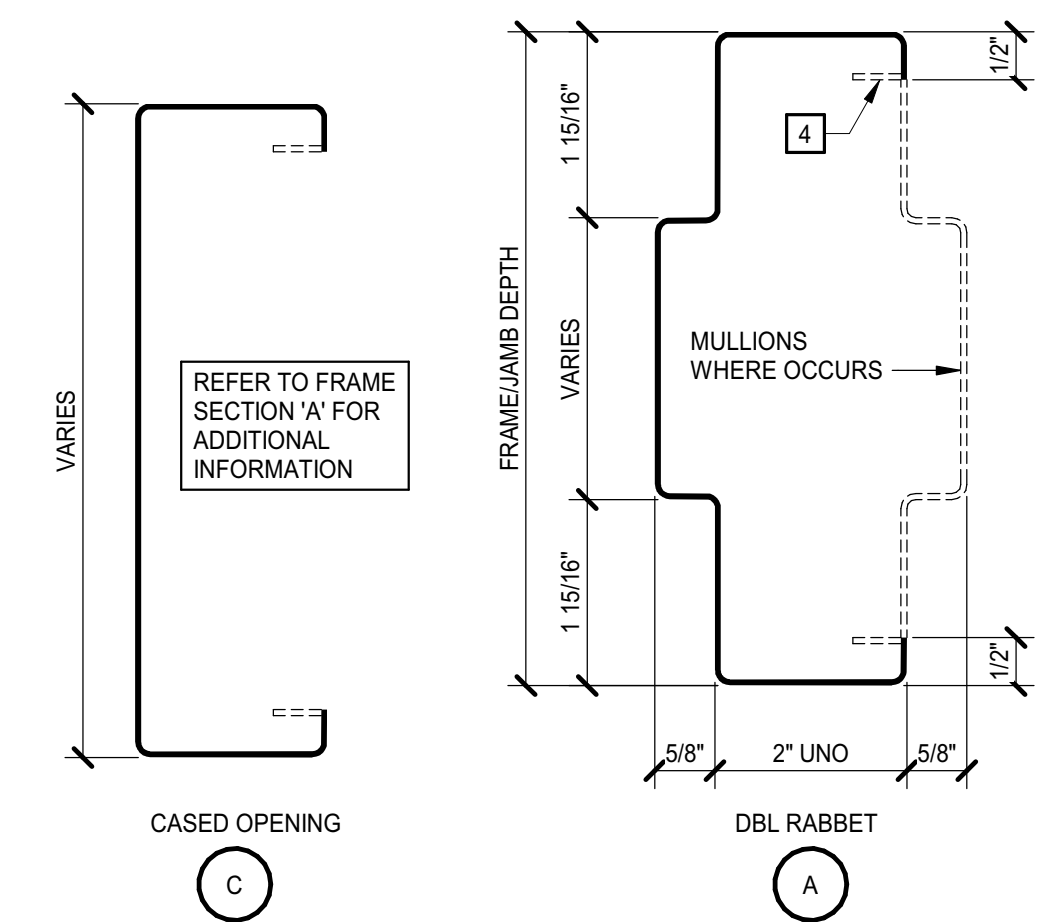


3 INTERIOR HEAD/JAMB/SILL AT MASONRY
6" = 1'-0"



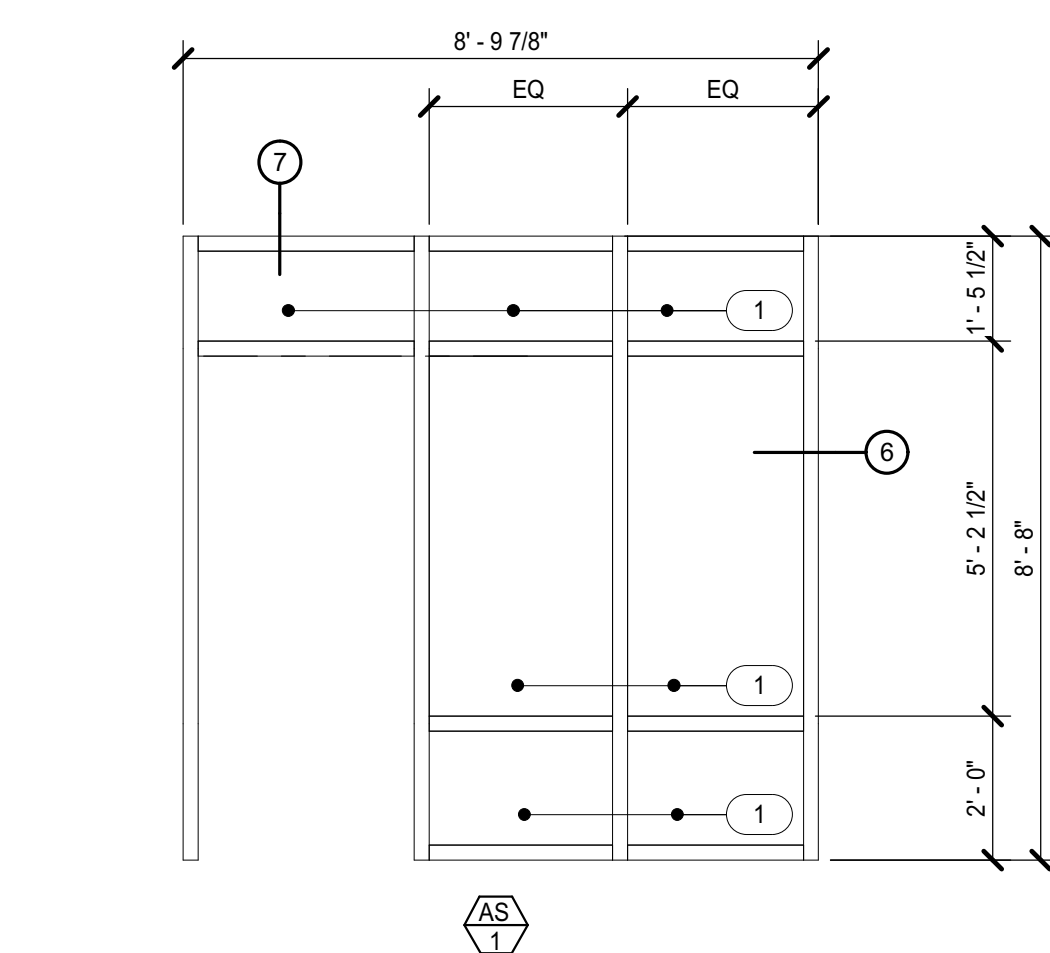
2 INTERIOR WRAP HEAD/JAMB/SILL
6" = 1'-0"

GLAZING TYPES AND NOTES
GLAZING TYPES REPRESENTED BY n
GLAZING TYPES:
1. 1/4" CLEAR, TEMPERED
2. NOT USED
GLAZING NOTES:
1. ALL GLAZING IN INTERIOR FRAMES SHALL BE TYPE 1, UNO
2. GLAZE ALL OPENINGS IN FRAMES UNLESS SPECIFICALLY INDICATED OTHERWISE
3. ALL GLAZING SHALL BE SAFETY GLASS UNLESS INDICATED OTHERWISE

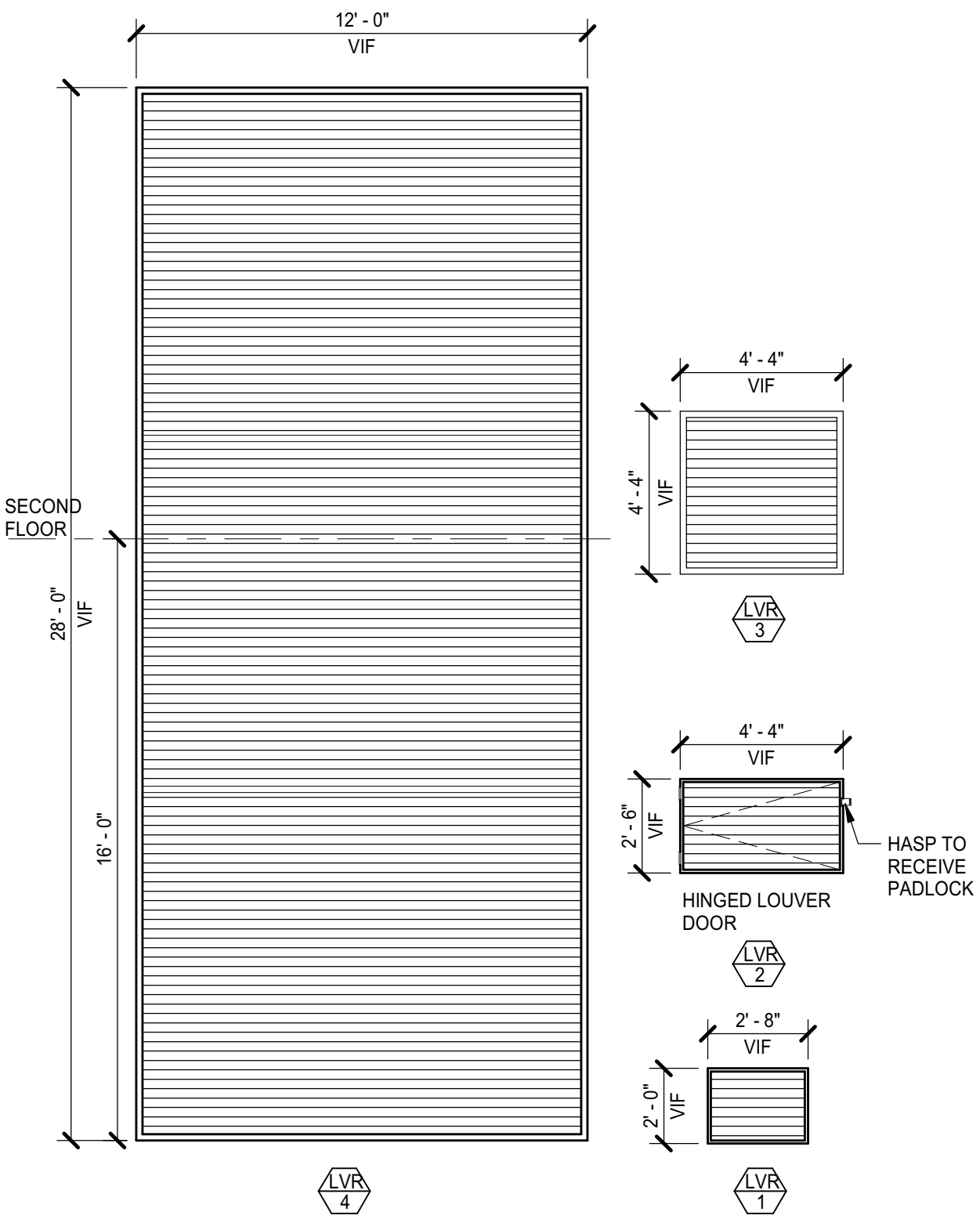


1. ALL FRAME/JAMB DEPTHS AT WRAP CONDITIONS SHALL BE SIZED TO SUIT PARTITION.
2. DOORS, PANELS, GLAZING, STOPS, AND OTHER FRAME INFILLS ARE NOT SHOWN IN FRAME SECTIONS AS THEY VARY - PROVIDE SAME WHERE INDICATED.

STEEL FRAME SECTIONS
NO SCALE



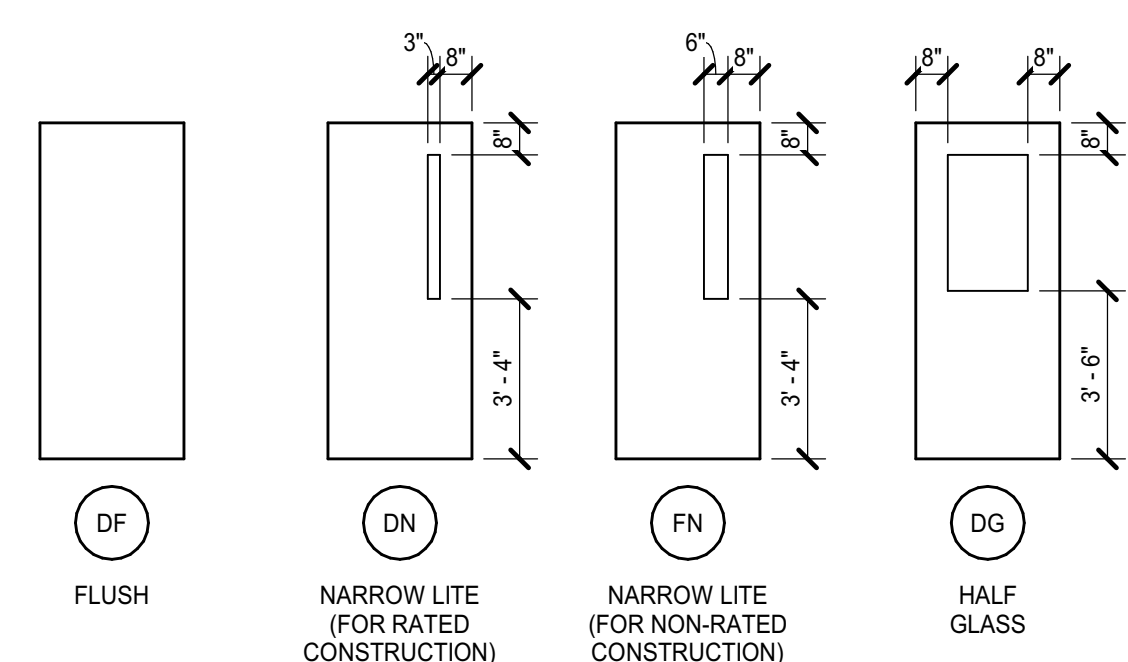
STOREFRONT FRAME ELEVATIONS
3/8" = 1'-0"



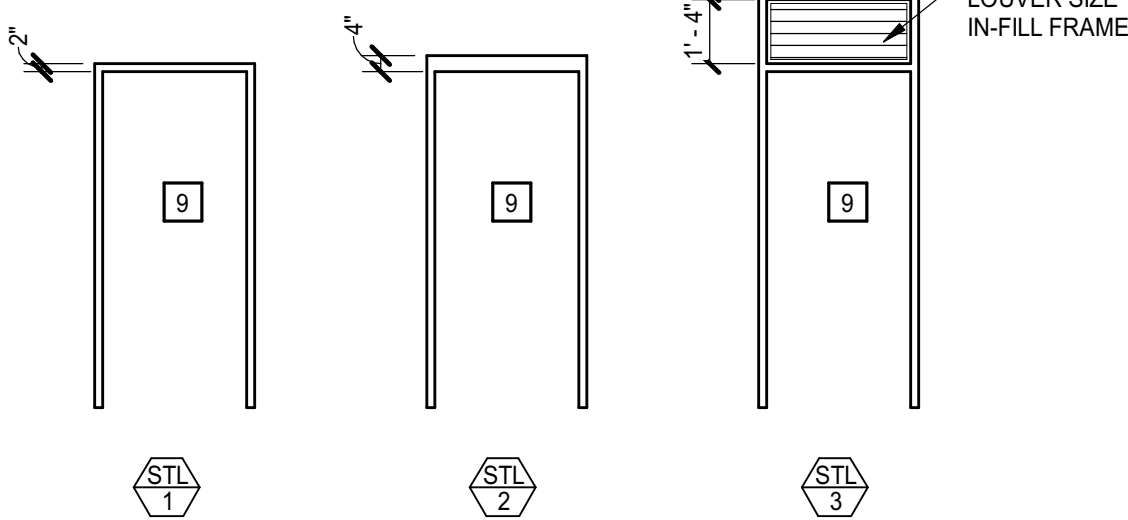
LOUVER TYPES
1/4" = 1'-0"

GENERAL NOTES
A. UNLESS INDICATED OTHERWISE, ALL DETAIL NUMBERS IN THE DOOR AND FRAME SCHEDULE FOR HEAD, JAMB AND SILL CONDITIONS REFER TO DRAWINGS A3.2.1 - A3.2.n.
B. DOOR AND FRAME DETAILS INDICATE GENERAL CHARACTERISTICS OF DOOR AND FRAME SIZES AND COMPONENTS AND MAY NOT INDICATE EXACT FIELD CONDITIONS OR REQUIREMENTS. COORDINATE DETAILS WITH OTHER DRAWINGS AND SPECS TO DETERMINE ALL COMPONENTS (E.G., SEALANTS, ANCHORS, HARDWARE, LINTELS, CLIPS) REQUIRED FOR COMPLETE AND FUNCTIONAL INSTALLATION.
C. DOOR SWINGS ON FLOOR PLANS TAKE PRECEDENCE OVER SWINGS INDICATED ELSEWHERE (E.G., ELEVATIONS).

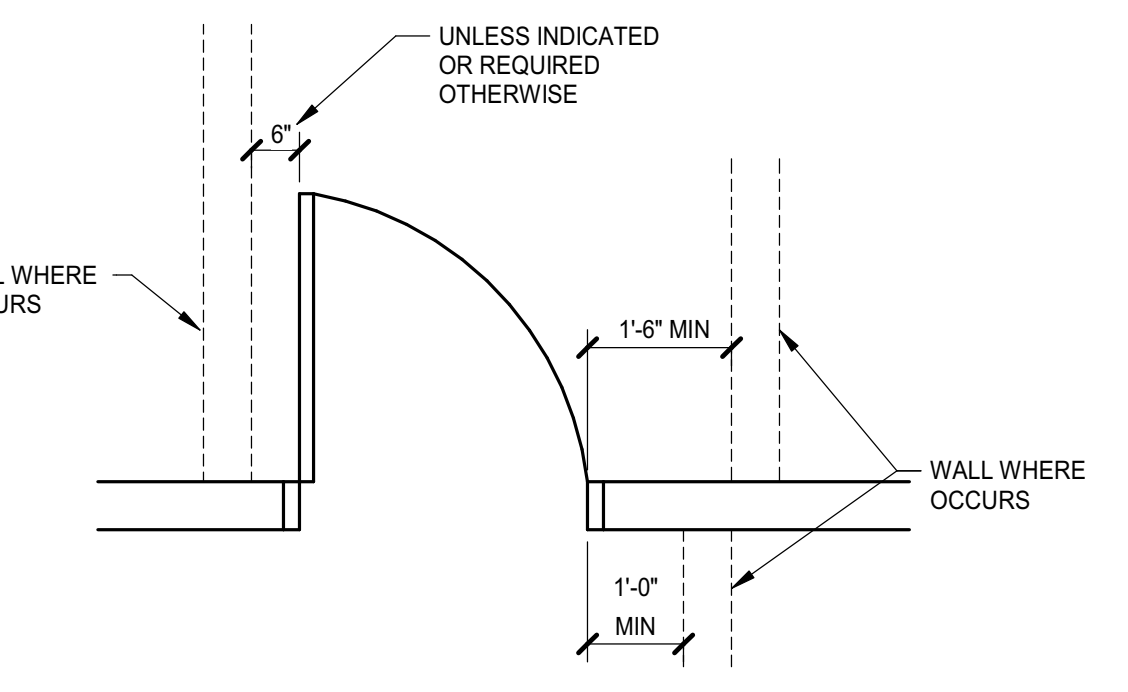
DOOR AND FRAME DETAIL KEYNOTES
REPRESENTED BY n
APPLIES TO DRAWINGS A3.2.1
1. ANCHORAGES, REINFORCING, SPECIFIC PARTITION CONSTRUCTION AND/OR LINTELS ARE NOT SHOWN FOR CLARITY.
2. REFER TO FRAME SECTION IN DOOR SCHEDULE FOR TYPE.
3. SEALANT, ALL SIDES - TOOL TO 90°.
4. BACKBEND RETURN @ GB LOCATIONS ONLY.
5. 9/16" @ MAS; 1/2" @ GB.
6. 1/4" @ JAMBS, UNO; DIMENSION @ HEAD & SILL VARIES.
7. BULLNOSE @ CMU JAMBS & SILLS.
8. 0" @ GB LOCATIONS; 1/16" @ MAS LOCATIONS.
9. SIZE AS REQUIRED TO ACCOMMODATE DOOR, HARDWARE AND FRAME COMPONENTS
10. DOOR, AS SCHEDULED
11. CUT VENEER TO SUITE OPENING
12. LOOSE LINTEL
13. DRIP EDGE, EXTEND 1/4"
14. WEEPS AT 24"
15. THROUGH WALL FLASHING
16. TERMINATION BAR AND SEALANT OVER CAVITY FLASHING
17. RIGID INSULATION, MATCH EXISTING THICKNESS
19. SHIM
20. BACKER ROD AND SEALANT
21. SCHEDULED WALL
22. PPT BLOCKING
23. 22 GA GALV CLOSURE
24. LOUVER
25. PAN FLASHING



DOOR TYPES
NO SCALE



DOOR TYPES
NO SCALE



MANEUVERING CLEARANCE AT DOORS
NO SCALE



PROJECT NO.	DATE
580999	MARCH 27, 2019
REVISIONS	
DATE	DESCRIPTION